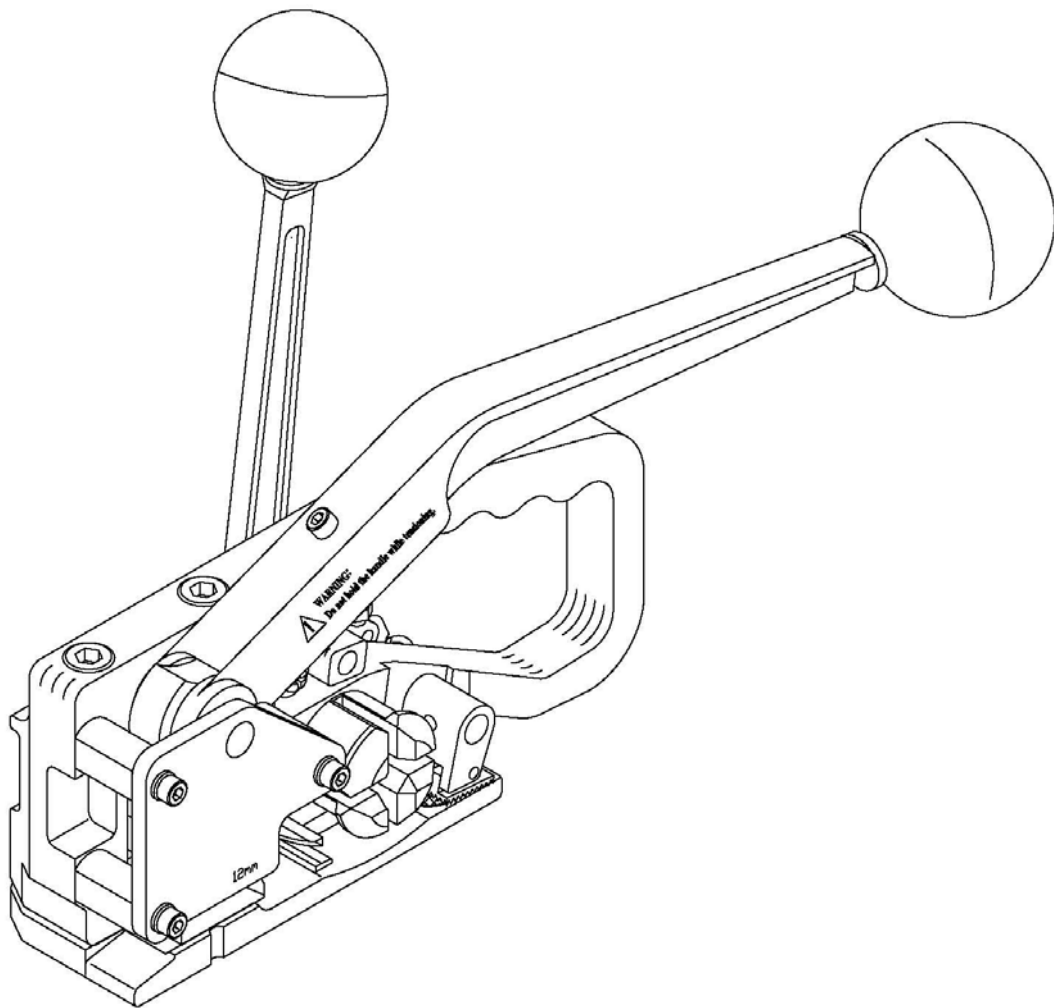




H-44 (For P.P. / PET Straps)

OPERATION MANUAL & SPARE PARTS LIST

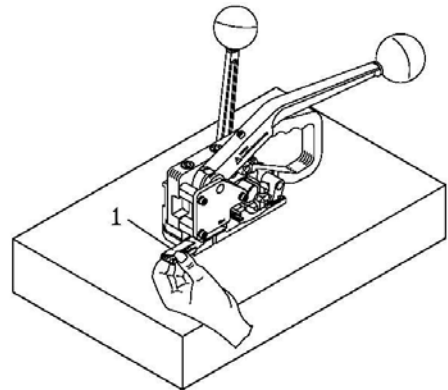


OPERATION INSTRUCTIONS FOR H-44

Straighten the strap first.

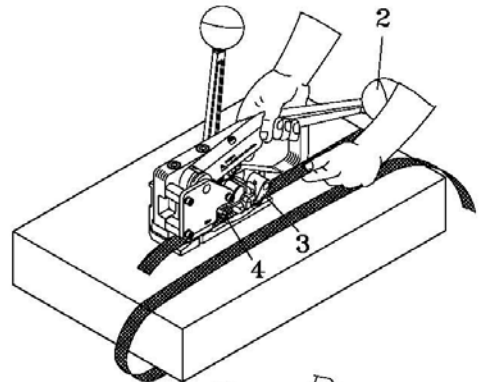
1. Inserting the seal

Using the left hand to insert seal (No. 1) into the tool from the rear side until it hits the strap stop.



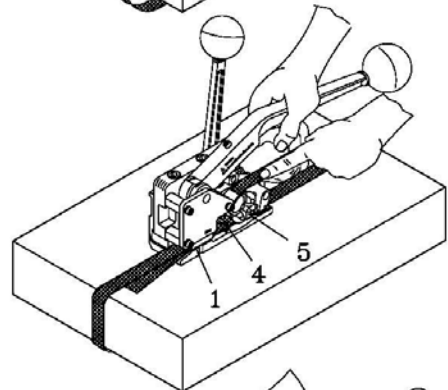
2. Feeding the strap around the package. Then insert the lower strap

Feed strap end around the package. Press Sealing Lever (No. 2) down to the bottom and insert the strap end through Gripper (No. 3) and Seal (No. 1). [The strap should go under the cutter (No.4)] Then, release Sealing Lever (No. 2) so that it comes back to its original position.



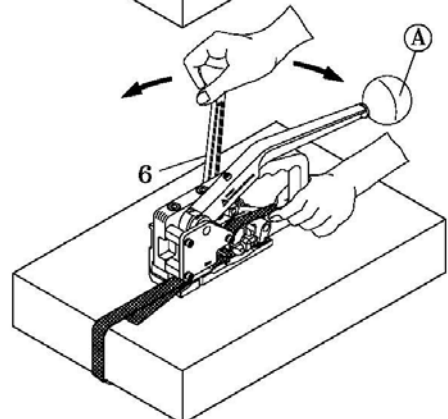
3. Inserting the upper strap

Insert the other side of strap (from dispenser) through the Seal (No.1) (above the strap which is just inserted in the seal as per point 2), the blades of cutting set (No. 4) and the Windlass (No. 5). Then, pull the strap straightly.



4. Tensioning the strap

Move Tension Handle (No. 6) back and forth until the strap is tensioned to the desired amount of tension.

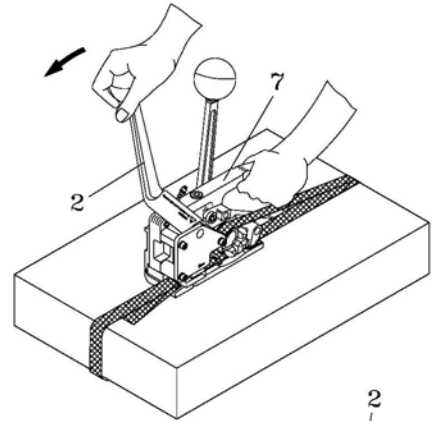


WARNING:

Do not hold the handle (A) while tensioning.

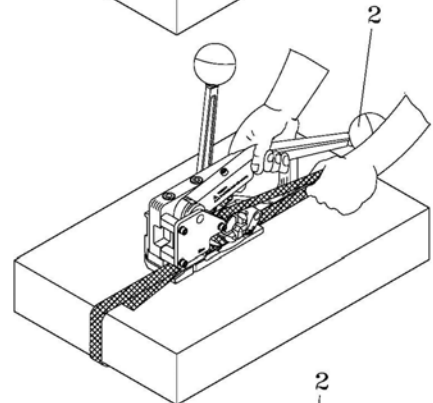
5. Sealing the strap

Hold the Body (No. 7) and use the other hand to pull Sealing Lever (No. 2) forward to the stop.



6. Cutting off the strap

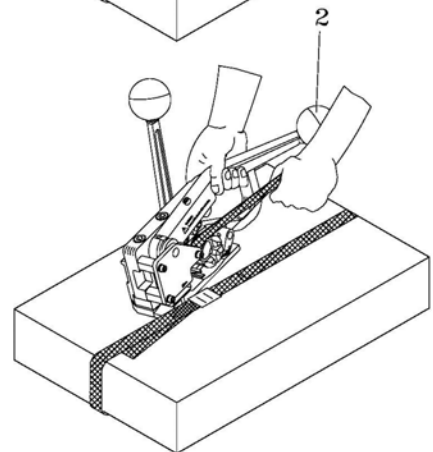
Press Sealing Lever (No. 2) down to the bottom to cut the strap.



7. Removing the tool

Remain the sealing lever as point 6 and remove the tool from the strap to the right.

The strapping procedure is completed.



Caution:

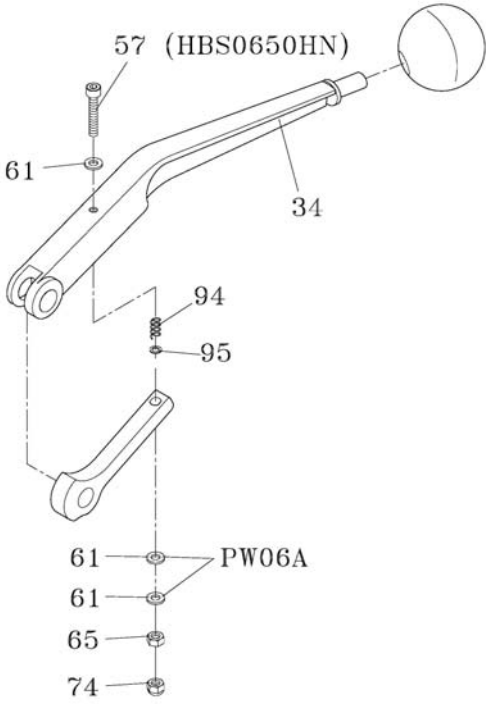
The tension force is calculated by the applied manual force multiplied by 10.

Thus the tension force is $20\text{kg} * 10 = 200\text{kg}$ if the applied manual force is 20kg at the tension lever.

Too much manual force at the tension lever would make some components worn easily.

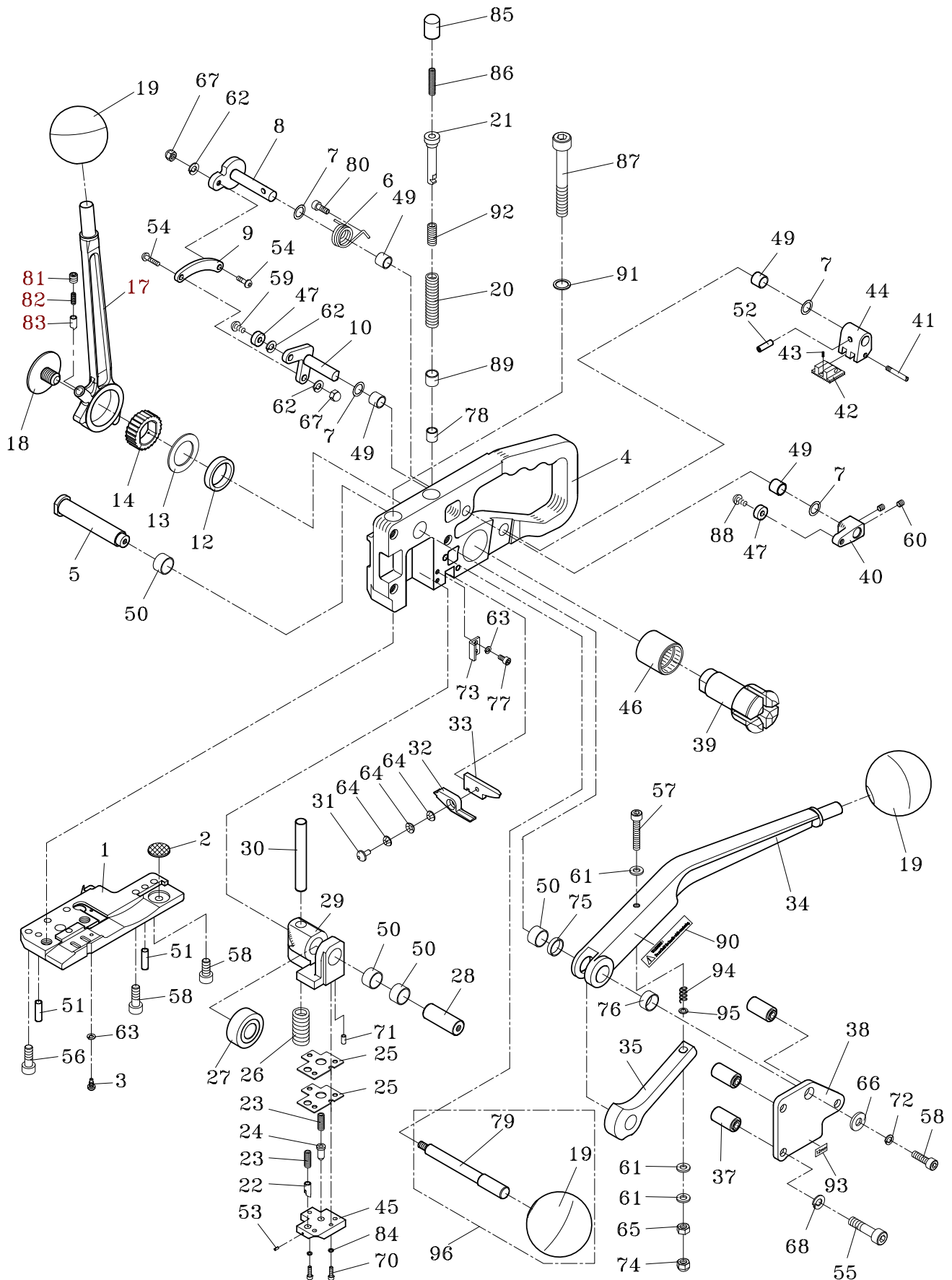
The available maximum tension force: For H-44-12 (for 12mm strap) 200kg

**If sealing efficiency is not enough, please adjust 65 and 74 upwards.
(NOTE: Do not adjust 65 and 74 more than 2mm.)**



COMBINATION TOOL FOR PLASTIC STRAPPING

H-44 12mm , 16 mm



REF. NO.	PART NO.	DESCRIPTION	Q'TY	REF. NO.	PART NO.	DESCRIPTION	Q'TY
1	H44-10012	Base (For 16mm)	1	49	MB1010	Metal Bushing, 1010	4
	H44-10013	Base (For 12mm)	1	50	MB1510	Metal Bushing, 1510	4
2	H44-10020	Base Plug	1	51	SP0620	Spring Pin, 6x20	2
3	H44-10030	Screw	1	52	SPS0516	Spring Pin, 5x16	1
4	H44-10041	Housing	1	53	SP0204	Spring Pin, 2x4	1
5	H44-10050	Shaft	1	54	H44-10540	Screw, M5x15	2
6	H44-10061	Spring	1	55	HBS0850HN	HBS, M8x50 (H)(N)	3
7	H44-10070	Washer	4	56	HBS0620	HBS, M6x20	3
8	H44-10080	Shaft	1	57	HBS0650HN	HBS, M6x50 (H)(N)	1
9	H44-10090	Connector	1	58	HBS0616N	HBS, M6x16 (N)	3
10	H44-10100	Lever	1	59	THS0510	THS, M5x10	1
12	H44-10120	Bushing	1	60	HSS0508GN	HSS, M5x8 (G)(N)	2
13	H44-10131	Washer	1	61	PW06A	PW, M6 (A)	3
14	H44-10141	Ratchet Wheel	1	62	SW05	SW, M5	3
17	H44-10171	Tension Handle	1	63	SW04	SW, M4	1
18	H44-10181	Side Plate	1	64	DS04	DS, 0410	3
19	H54-021	Knob	2	65	HN06	HN, M6	1
	H54-021	Knob (Option)	1	66	PW06C	PW, M6 (C)	1
20	H44-10200	Spring	1	67	CAP05	CAP, M5	2
21	H44-10211	Rod Bar	1	68	SW08	SW, M8	3
22	H44-10220	Seal Stop Pin Front	1	70	HBS0310	HBS, M3x10	2
23	H44-10230	Spring	2	71	H44-10710	Lock Pin, 4x8	2
24	H44-10240	Seal Retainer (For 16mm)	1	72	SW06	SW, M6	1
	H44-10241	Seal Retainer (For 12mm)	1	73	H44-10730	Stopper	1
25	H44-10250	Shim	2	74	CAP06	CAP, M6	1
26	H44-10260	Spring	1	75	MB1504	Metal Bushing, 1504	1
27	H44-10270	Pressure Roller	1	76	MB1508	Metal Bushing, 15x7.8	1
28	H44-10280	Shaft	1	77	HBS0408N	HBS, M4x8 (N)	1
29	H44-10290	Punch Base (For 16mm)	1	78	MB0808	Metal Bushing, 0808	1
	H44-10291	Punch Base (For 12mm)	1	79	H44-10790	Horizontal Handle (Option)	1
30	H44-10300	Pillar	1	80	HBS0412N	HBS, M4x12 (N)	1
31	H44-10310	Bolt	1	81	HSS0808	HSS, M8x8	1
32	H44-10320	Lower Cutter	1	82	H44-10820	Ratchet Spring	1
33	H44-10330	Upper Cutter	1	83	H44-10830	Ratchet Stop	1
34	H44-10340	Sealing Lever	1	84	SW03	SW, M3	2
35	H44-10350	Cam	1	85	H44-10850	Rod Head	1
37	H44-10370	Spacer	3	86	H44-10860	Spring	1
38	H44-10380	Cover	1	87	HBS10100HN	HBS, M10x100 (H)(N)	2
39	H44-10391	Windlass	1	88	THS0512	THS, M5x12	1
40	H44-10400	Releasing Lever	1	89	MB1410	Metal Bushing, 1410	1
41	H21-019	Gripper Screw	1	90	LA-50563	Warning Label	1
42	H23-018	Gripper Plate	1	91	H44-10910	Washer	2
43	H21-017	Gripper Spring	1	92	H44-10920	Spring	1
44	H44-10440	Gripper	1	93	LA-50562	Label (For 16mm)	1
45	H44-10450	Punch (For 16mm)	1		LA-50560	Label (For 12mm)	1
	H44-10451	Punch (For 12mm)	1	94	H44-10940	Spring	1
46	BRFCB2530	Bearing, FCB2530	1	95	H44-10950	Washer	1
47	BR605ZZ	Bearing, 605ZZ	2	96	H44-10960	Horizontal Handle Ass'y (Option)	1

* PLEASE ORDER PARTS BY PARTS NO.,DESCRIPTION AND Q'TY.